

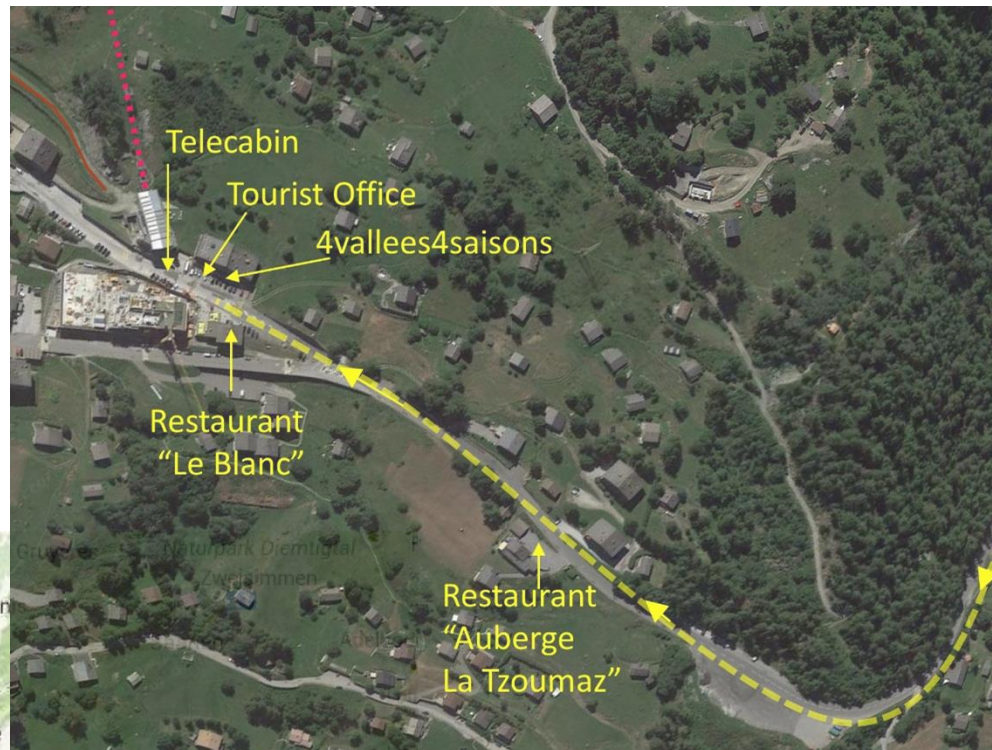
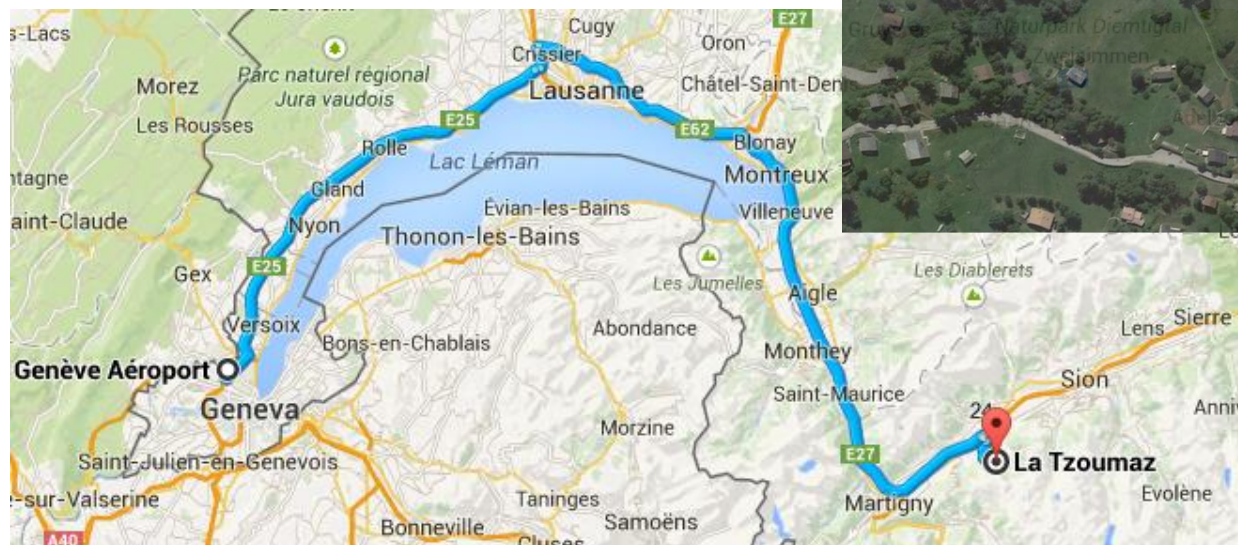
# La Tzoumaz by Road

157km / 99mi, 1h45 in light traffic

- From Geneva Airport, take the A1 motorway towards Lausanne
- Near Lausanne, follow the A9 motorway towards Sion/Simplon
- Take exit 24 "Riddes" and turn right (and right again) to Riddes
- At the roundabout turn left, then take the first right to La Tzoumaz
- Follow the road for 13km / 8mi up the mountain to La Tzoumaz

*Unless you are arriving between 16h and 19h on a Saturday, please contact us when you leave the motorway in Riddes by SMS, phone call or email. This way we can make our way to meet you when you arrive.*

- On arrival in the village, continue past the Auberge LA TZOUMAZ on your left
- Continue straight on when the main street goes down to the left
- Park in front of our office, just opposite the Restaurant LE BLANC. We are next to the Tourist Office and the Telecabin



4vallees  
4saisons  
+com

Phone: +41 79 679 5758

Email: [holidays@4v4s.com](mailto:holidays@4v4s.com)

LA TZOUMAZ

VERBIER - 4 VALLÉES 

WhatsApp:

